

## 1. IDENTIFICATION OF THE SUBSTANCE/MIXTURE AND OF THE COMPANY/UNDERTAKING

### 1.1 Product Identifier

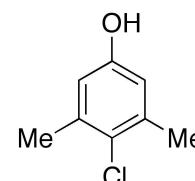
**Chemical Name** Chloroxylenol

### 1.2 Relevant Identified Uses of the Substance or Mixture and Uses Advised Against

**Product Uses** To be used only for scientific research and development. Not for use in humans or animals.

### 1.3 Details of the Supplier of the Safety Data Sheet

**Company** Swadesh Life Science  
H-103, Sumel 7, Near Soni ni chali  
BRTS, Rakhiyal,  
Ahmedabad, Gujarat, India



## 2. HAZARDS IDENTIFICATION

### 2.1/2.2 Classification of the Substance or Mixture and Label Elements GHS Hazards Classification

Acute Toxicity, Oral (Category 4)  
Skin Irritation (Category 2)  
Serious Eye Irritation (Category 2A)  
Sensitisation, Skin (Category 1)

### GHS Hazards Identification

**Signal Word**



Warning

### GHS Hazard Statements

H302 Harmful if swallowed.  
H315 Causes skin irritation.  
H319 Causes serious eye irritation.  
H317 May cause an allergic skin reaction.

### GHS Precautionary Statements

P261 Avoid breathing dust/fume/gas/mist/vapours/spray  
P264 Wash hands thoroughly after handling.  
P270 Do not eat, drink or smoke when using this product.  
P280 Wear protective gloves/protective clothing/eye protection/face protection.  
P301/P312 IF SWALLOWED: Call a POISON CENTER or doctor/physician if you feel unwell.  
P330 Rinse mouth.

P302/P352

IF ON SKIN: Wash with plenty of soap and water

## **2.3 Unclassified Hazards/Hazards Not Otherwise**

**Classified** No data available.

## **3. COMPOSITION/INFORMATION ON INGREDIENTS**

### **3.1 Substances**

**Molecular Formula:** C<sub>8</sub>H<sub>9</sub>ClO

**Molecular Weight:** 156.61

**CAS Registry #:** 88-04-0

#### **Synonyms**

4-Chloro-3,5-dimethylphenol; 4-Chloro-3,5-xylene; 2,6-Dimethyl-4-hydroxy-1-chlorobenzene; 2-Chloro-5-hydroxy-1,3dimethylbenzene; 2-Chloro-5-hydroxy-m-xylene; 4-Chloro-5,3-dimethylphenol; 4-Chloro-m-xylene; Benzyltol; Camel; Chloroxylenol; Desson; Dettol; Ecotru; Espadol; Finecide C 2000; Hokubarine E 400; Husept Extra; NSC 4971; Nipacide PX; Ottasept; Ottasept Extra; PCMX; Parametaxyleneol; RBA 777; p-Chloro-3,5-xyleneol; p-Chloro-m-Xyleneol;

### **3.2 Mixtures**

Not mixture.

## **4. FIRST AID MEASURES**

### **4.1 Description of First Aid Measures**

#### **General Advice**

If medical attention is required, show this safety data sheet to the doctor.

#### **If Inhaled**

If inhaled, move person to fresh air. If not breathing, give artificial respiration and consult a physician.

#### **In Case of Skin Contact**

Wash affected area with soap and water. Consult a physician if any exposure symptoms are observed.

#### **In Case of Eye Contact**

Immediately rinse eyes with plenty of water for at least 15 minutes. Consult a physician.

#### **If Swallowed**

Never give anything by mouth to an unconscious person. Rinse mouth with water. Do NOT induce vomiting unless advised to do so by a physician or Poison Control Center. Seek medical attention.

### **4.2 Most Important Symptoms and Effects, Both Acute and Delayed**

The most important known symptoms and effects are described in the labeling (see section 2.2) and/or section 11.

### **4.3 Indication of any Immediate Medical Attention and Special Treatment Needed**

No data available.

## **5. FIREFIGHTING MEASURES**

### **5.1 Extinguishing Media**

Use water spray, alcohol-resistant foam, dry chemical or carbon dioxide.

### **5.2 Special Hazards Arising from the Substance or Mixture**

Carbon oxides, Hydrogen chloride

### **5.3 Advice for Firefighters**

Wear self contained breathing apparatus for fire fighting if necessary.

## **6. ACCIDENTAL RELEASE MEASURES**

### **Personal precautions**

Wear respiratory protection. Avoid dust formation. Avoid breathing vapours, mist or gas. Ensure adequate ventilation. Evacuate personnel to safe areas. Avoid breathing dust.

### **Environmental precautions**

Prevent further leakage or spillage if safe to do so. Do not let product enter drains.

### **Method and materials for containment and cleaning up**

Pick up and arrange disposal without creating dust. Sweep up and shovel. Keep in suitable, closed containers for disposal.

## **7. HANDLING AND STORAGE**

### **7.1 Precautions for safe handling**

Avoid contact with skin and eyes. Avoid formation of dust and aerosols. Provide appropriate exhaust ventilation at places where dust is formed.

### **7.2 Conditions for safe storage**

Keep container tightly closed in a dry and well-ventilated place.  
Keep in a dry place.

Storage conditions: Refrigerator

### **7.3 Specific End Uses**

For scientific research and development only. Not for use in humans or animals.

## **8. EXPOSURE CONTROLS/PERSONAL PROTECTION**

### **8.1 Control Parameters**

Contains no components with established occupational exposure limits.

### **8.2 Exposure Controls**

#### **Appropriate Engineering Controls**

A laboratory fumehood or other appropriate form of local exhaust ventilation should be used to avoid exposure.

#### **Personal Protective Equipment**

All recommendations below are advisory in nature and a risk assessment should be performed by the employer/end user prior to use of this product. The type of protective equipment must be selected based on the amount and concentration of the dangerous material being used in the workplace.

#### **Eye/Face Protection**

Safety goggles or face shield. All equipment should have been tested and approved under appropriate standards, such as NIOSH (US), CSA (Canada), or EN 166 (EU).

#### **Skin Protection**

Gloves should be used when handling this material. Gloves are to be inspected prior to use. Contaminated gloves are to be removed using proper glove removal technique so that the outer surface of the glove does not contact bare skin. Dispose of contaminated gloves after use in compliance with good laboratory practices and local requirements.

## MATERIAL SAFETY DATA SHEET

These recommendations may not apply if the material is mixed with any other chemical, or dissolved into a solution. A risk assessment must be performed to ensure the gloves will still offer acceptable protection.

### Body Protection

Fire resistant (Nomex) lab coat or coveralls.

### Respiratory Protection

Recommended respirators are NIOSH-approved N100 or CEN-approved FFP3 particulate respirators. These are to be only used as a backup to local exhaust ventilation or other engineering controls. If the respirator is the only means of protection, a full-face supplied air respirator must be used.

## 9. PHYSICAL AND CHEMICAL PROPERTIES

### 9.1 Information on Basic Physical and Chemical Properties

#### A) Appearance

Dark red liquid

#### C) Odour Threshold

No data available

#### E) Melting Point/Freezing Point

113-115°C

#### G) Flash point

No data available

#### I) Flammability (Solid/Gas)

No data available

#### K) Vapour Pressure

No data available

#### M) Relative Density

No data available

#### O) Partition Coefficient: n-octanol/water

No data available

#### Q) Decomposition Temperature

No data available

#### S) Explosive Properties

No data available

#### B) Odour

No data available

#### D) pH

No data available

#### F) Initial Boiling Point/Boiling Range

No data available

#### H) Evaporation Rate

No data available

#### J) Upper/Lower Flammability/Explosive Limits

No data available

#### L) Vapour Density

No data available

#### N) Solubility

Ethanol , Either

#### P) Auto-Ignition Temperature

No data available

#### R) Viscosity

No data available

#### T) Oxidizing Properties

No data available

### 9.2 Other Information

no data available

## 10. STABILITY AND REACTIVITY

### 10.1 Reactivity

No data available.

### 10.2 Chemical Stability

Stable under recommended storage conditions.

### 10.3 Possibility of Hazardous

Reactions No data available.

### 10.4 Conditions to

Avoid No data available.

### 10.5 Incompatible Materials

Strong oxidizing agents, Strong bases.

## 11. TOXICOLOGICAL INFORMATION

### 11.1 Information on Toxicological Effects

#### A) Acute Toxicity

**Oral LD50:** Rat - 3,830 mg/kg

**Inhalation LC50:** No data available.

**Dermal LD50:** No data available.

#### B) Skin Corrosion/Irritation

Moderate skin irritant.

#### C) Serious Eye Damage/Irritation

Moderate eye irritant.

#### D) Respiratory or Skin

##### Sensitization

May cause an allergic skin reaction.

#### E) Germ Cell Mutagenicity

No data available

#### F) Carcinogenicity

No data available

#### G) Reproductive

##### Toxicity/Teratogenicity

No data available

#### H) Single Target Organ Toxicity - Single Exposure

No data available

#### I) Single Target Organ Toxicity - Repeated Exposure

No data available

#### J) Aspiration Hazard

No data available

#### K) Potential Health Effects and Routes of Exposure

##### **Inhalation**

May be harmful if inhaled. May cause respiratory tract irritation.

##### **Ingestion**

Harmful if swallowed.

##### **Skin**

May be harmful if absorbed through skin. Causes skin irritation.

##### **Eyes**

## MATERIAL SAFETY DATA SHEET

Causes eye irritation.

### **L) Signs and Symptoms of Exposure**

The most important known symptoms and effects are described in the labeling (see section 2.2) and/or section 11.

To the best of our knowledge, the chemical, physical, and toxicological properties of this material have not been thoroughly investigated.

### **M) Additional Information**

RTECS:ZE6850000

## **12. ECOLOGICAL INFORMATION**

**12.1 Toxicity** No data available.

**12.2 Persistence and Degradability** No data available.

**12.3 Bioaccumulative Potential** No data available.

**12.4 Mobility in Soil** No data available.

**12.5 Results of PBT and vPvB Assessment** No data available.

**12.6 Other Adverse Effects** No data available.

## **13. DISPOSAL CONSIDERATIONS**

### **13.1 Waste Treatment Methods**

#### **A) Product**

Product may be burned in an incinerator equipped with afterburner and scrubber. Excess and expired materials are to be offered to a licensed hazardous material disposal company. Ensure that all Federal and Local regulations regarding the disposal and destruction of this material are followed.

#### **B) Contaminated Packaging**

Dispose of as above.

#### **C) Other Considerations**

Product is not to be disposed of in sanitary sewers, storm sewers, or landfills.